

www.araymond-automotive.com

ARAYMOND FRANCE SAS

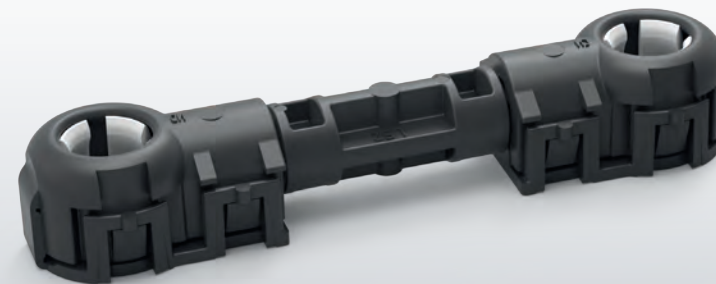
113, cours Berriat - BP 157

38000 Grenoble - FRANCE

Tel.: +33 4 76 33 49 49

E-mail: info@araymond-automotive.com

MODULAR CONNECTING ROD



2016/10 © *ARAYMOND FRANCE SAS, RCS Grenoble 352 948 434 - 113, cours Berriat - BP 157 - 38000 Grenoble - FRANCE has designed this booklet.

**"ARaymond Network" means a network of companies which have a license of use of ARAYMOND™. This booklet is provided for information purposes only and does not constitute an offer or an agreement.

ARAYMOND FRANCE SAS makes no warranty or representation whatsoever, express or implied, including but not limited to the accuracy, reliability, novelty, completeness, fit for a particular purpose or merchantability of the information contained in it. If you need further information, please contact ARAYMOND FRANCE SAS.

CLOSE TO YOU EVERYWHERE



- 1 center of expertise
- 11 engineering centers
- 25 manufacturing sites in 25 countries
- 6,000 employees
- 150 years of experience

OVERVIEW

Unlimited possibilities	p.4
Environment	p.5
Modular 3-part solution	p.6
Technical specifications	p.8
Key advantages	p.9
Endless application list	p.10
A worldwide network	p.11

UNLIMITED POSSIBILITIES



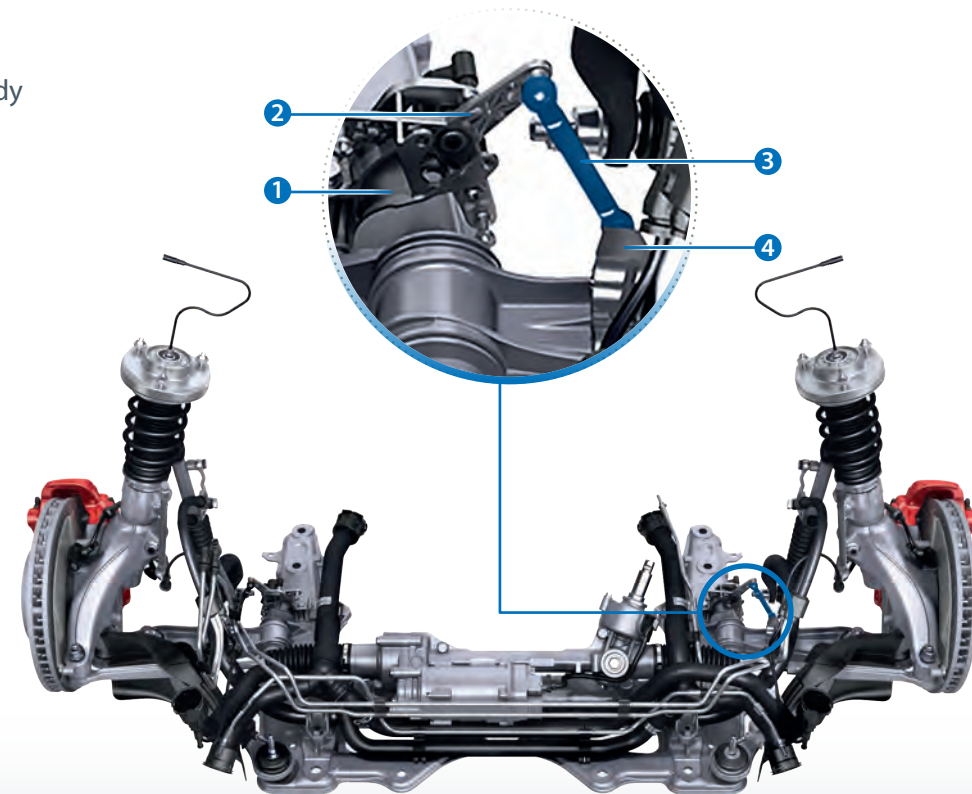
- ① Height sensors for smart lightening
- ② Height sensors for dynamic suspension
- ③ Position sensors for gearbox shift
- ④ Actuators for aerodynamic flaps
- ⑤ Actuators for intake manifold flaps
- ⑥ Actuators for throttle butterfly valves
- ⑦ Actuators for closure systems
- ⑧ Actuators for air-conditioning and heating flaps

ENVIRONMENT

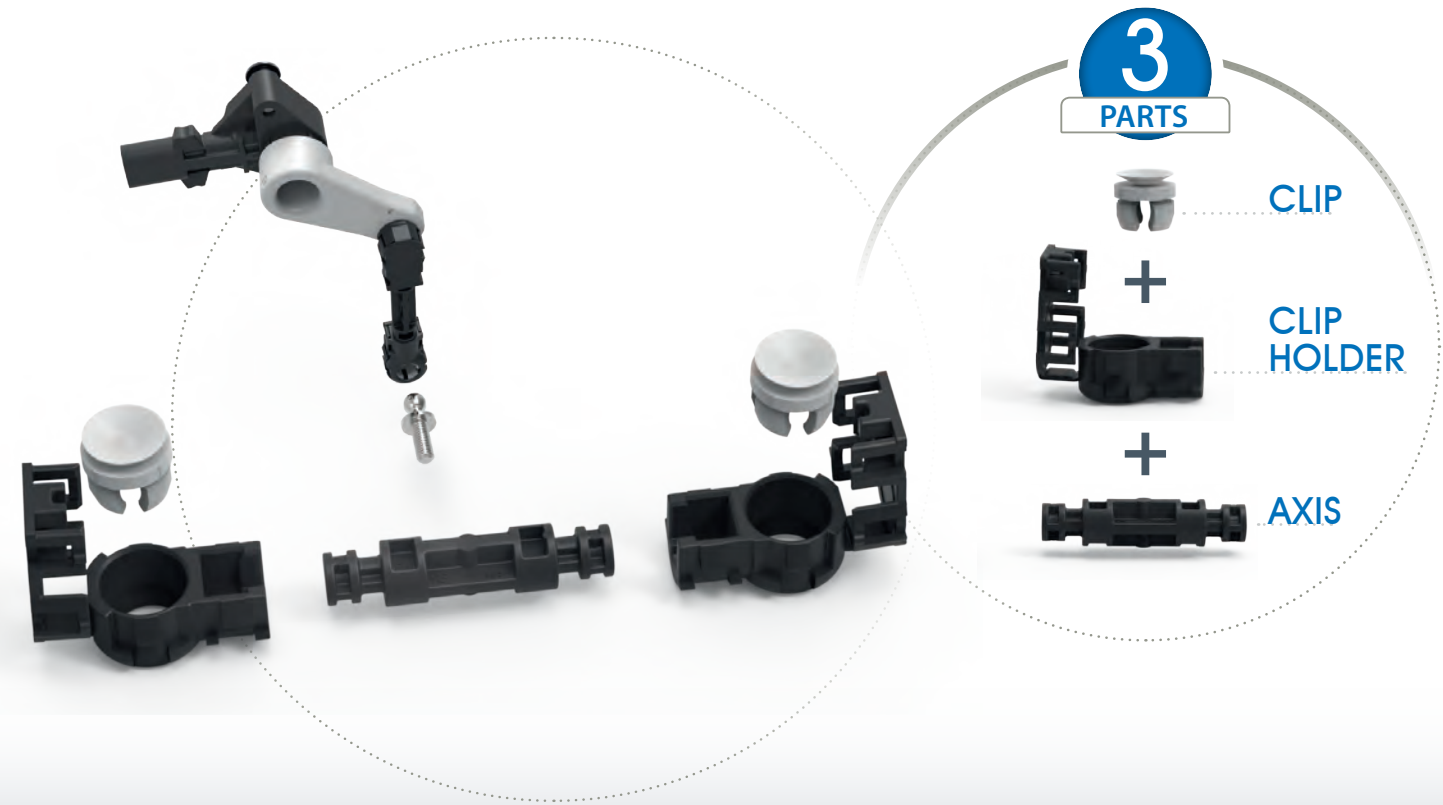
A height sensor is fixed on the body and on the suspension arm via a rod linkage.

Our system interface expertise at ARaymond enables us to **continuously improve existing solutions.**

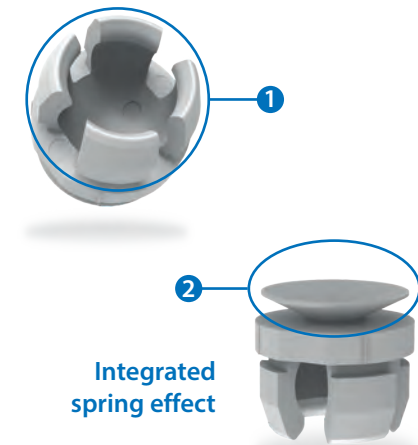
- ① Height sensor
- ② Lever arm
- ③ Rod linkage
- ④ Suspension arm support



MODULAR 3-PART SOLUTION



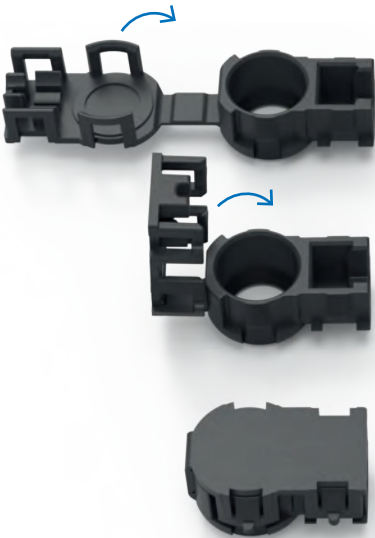
CLIP



- 1 • Unclipping force made by jamming
• Reduced friction
- 2 • Reduced clipping force
• Gap/time worn compensation

CLIP HOLDER

with cap



- Pliable link + lock enable by flexible edges
- Locked without gap/orientation management
- Maintain clip installed

AXIS

with multiple lengths
or multiple shapes



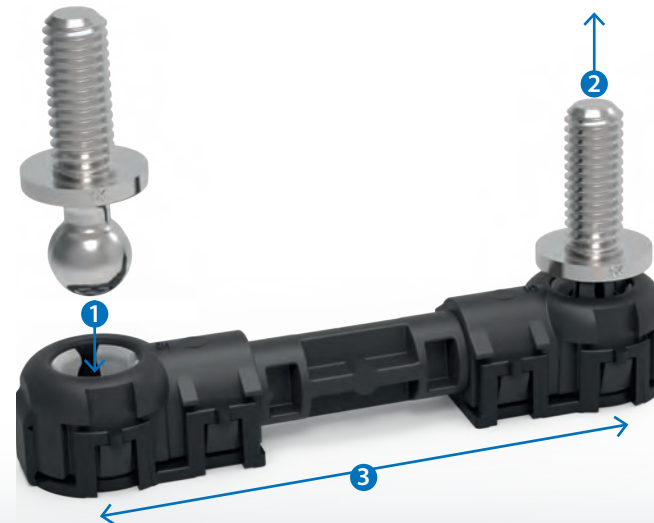
- Modular mold for an easy adaptation to customer requests
- Multiple length option from 35.5 mm to 180 mm
- Specific shapes easily adaptable

TECHNICAL SPECIFICATIONS



KEY ADVANTAGES

- Ergonomic: **low push in force**
- Mechanical performance: **high pull out force**
- Automatic **gap & wear compensation**
- **Modular** axis length and clip orientation



- Interchangeable axis: **custom shapes** possible
- **Light weight**: 100% plastic solution
- Clean assembly process: **no grease** needed



- 1** Clipping effort < 3 daN
- 2** Unclipping effort from 10 daN to 22 daN
- 3** Axial peak effort > 20 daN

ENDLESS APPLICATION LIST

Unlimited possibilities!



Send us your specifications,
we'll send back the solution!

A WORLDWIDE NETWORK

FRANCE Tel. +33 4 76 33 49 49 Email: contact.fr@araymond-automotive.com	RUSSIA Tel. +7 8313 398111 Email: contact.ru@araymond-automotive.com	CHINA Tel. +86 0511-85309100 Email: contact.cn@araymond-automotive.com
GERMANY Tel. +49 7621 174-0 Email: contact.de@araymond-automotive.com	TURKEY Tel. +90 262 658 1058 Email: contact.tr@araymond-automotive.com	INDIA Tel. +91 (2135) 676 200 Email: contact.in@araymond-automotive.com
ITALY Tel. +39 0161 937311 Email: contact.it@araymond-automotive.com	UNITED KINGDOM Tel. +44 1732 871934 Email: contact.uk@araymond-automotive.com	JAPAN Tel. +81 463 97 4600 Email: contact.jp@araymond-automotive.com
SPAIN Tel. +34 93 877 1314 Email: contact.es@araymond-automotive.com	USA Tel. +1 248 226 5900 Email: contact.us@araymond-automotive.com	SOUTH KOREA Tel. +82 70 5055 5000 contact.kr@araymond-automotive.com
CZECH REPUBLIC Tel. +420 483 358 111 Email: contact.cz@araymond-automotive.com	BRAZIL Tel. +55 19 3836-6900/6928/6924 Email: contact.br@araymond-automotive.com	